

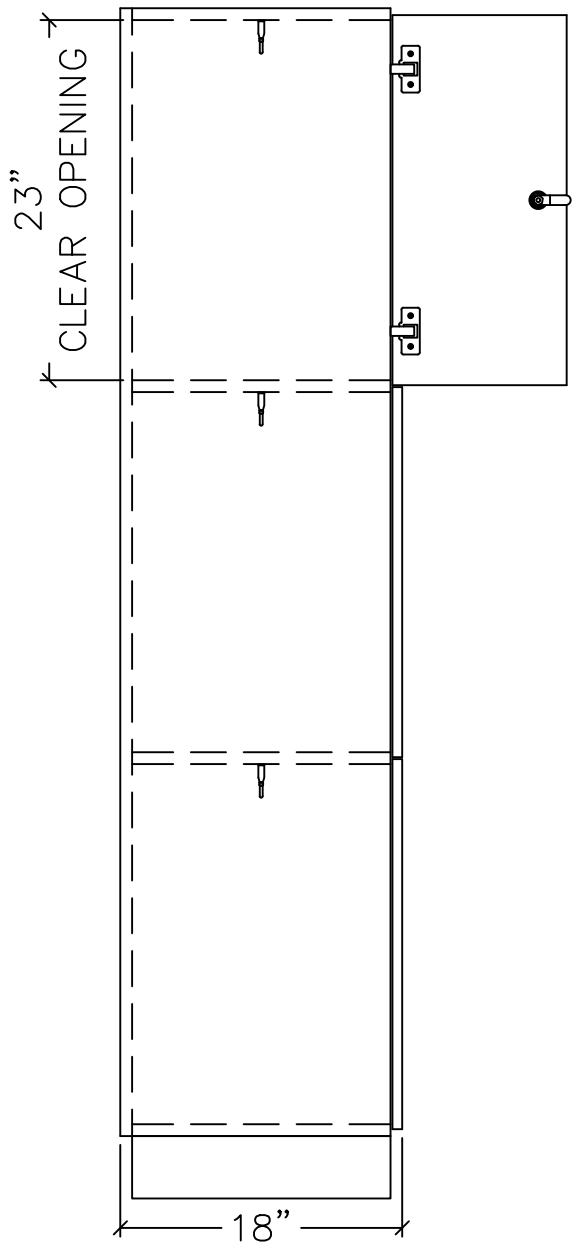
HALLOWELL CLUB LOCKERS (PRODUCT No. UW3282-3A-W) (3-WIDE)
 HALLOWELL CLUB LOCKERS (PRODUCT No. UW1282-3A-W) (1-WIDE)

HALLOWELL CLUB LOCKER LOCKER SPECIFICATION

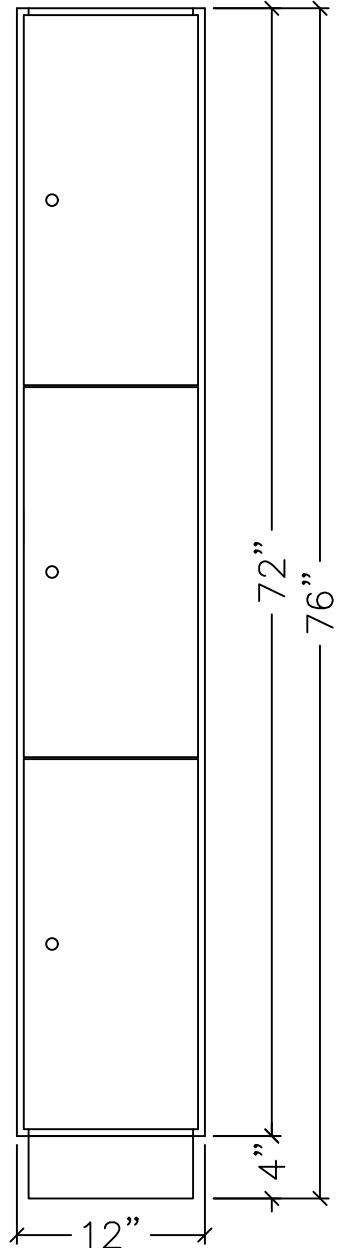
COMPONENT	THICKNESS	MATERIAL	REMARKS
DOOR	3/4"	RED OAK PLYWOOD	SOLID
TOPS	3/4"	RED OAK PLYWOOD	SOLID
BOTTOMS	3/4"	RED OAK PLYWOOD	SOLID
SHELVES	3/4"	RED OAK PLYWOOD	SOLID
SIDES	3/4"	RED OAK PLYWOOD	SOLID
BACKS	3/4"	RED OAK PLYWOOD	SOLID
HINGES			CONCEALED EUROPEAN STYLE
LOCKS			KEY OPERATED CAM

* ASSEMBLED

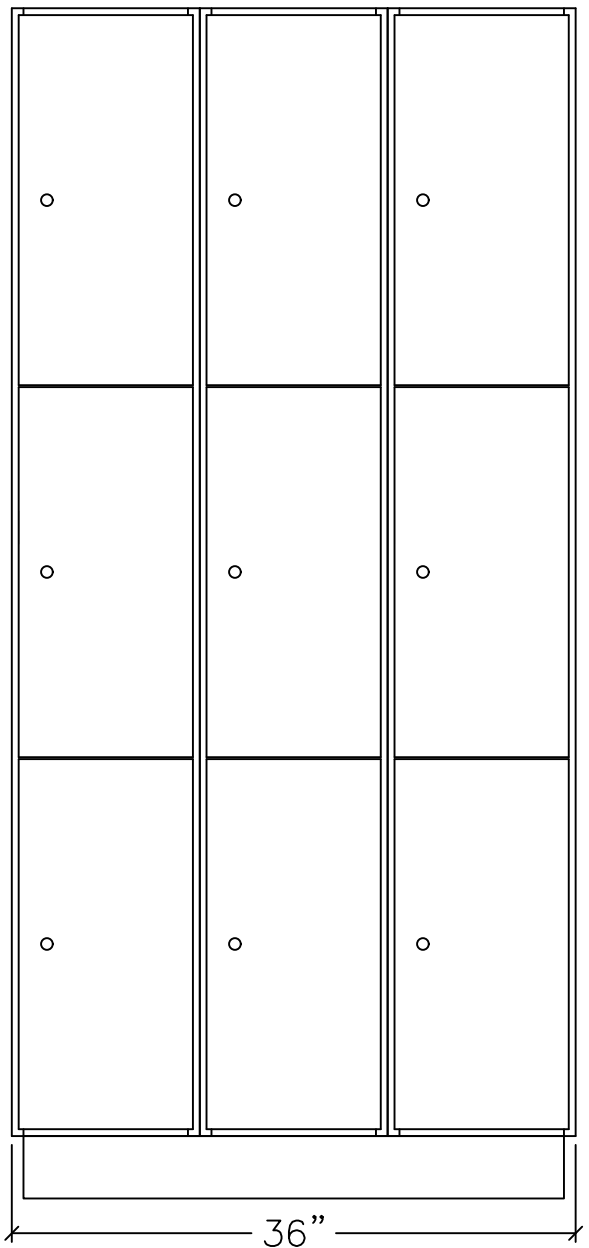
**FOR SUBMITTAL
 USE ONLY
 SUBJECT TO APPROVAL**



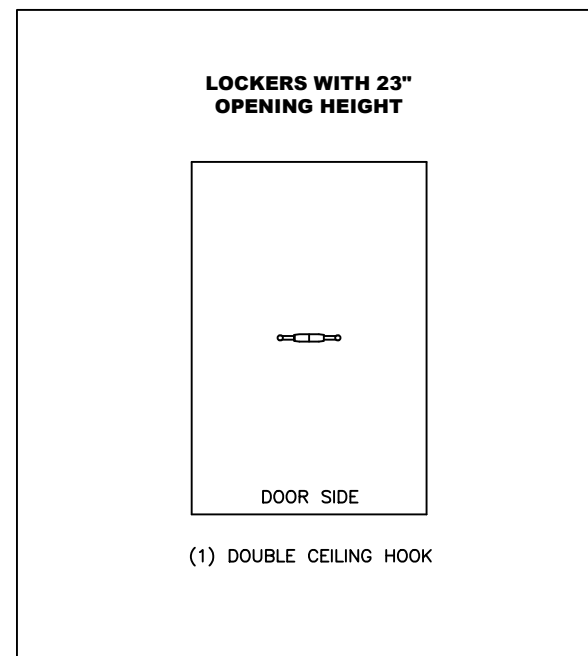
SIDE VIEW



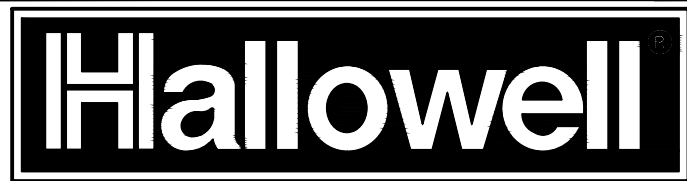
1-WIDE FRONT VIEW



3-WIDE FRONT VIEW



HOOK CONFIGURATION



THIS DRAWING AND THE INFORMATION ON IT IS THE CONFIDENTIAL PROPERTY OF HALLOWELL, INC. AND SHALL NOT BE COPIED OR DISCLOSED TO OTHERS WITHOUT WRITTEN PERMISSION. ONLY HALLOWELL, INC. RESERVES THE RIGHT TO ALTER ANY DESIGN. ANY UNAUTHORIZED MODIFICATIONS RELEASES HALLOWELL, INC. FROM ALL LIABILITIES.

TOLERANCES UNLESS SPECIFIED:
 FRACTIONS: ±1/32 DECIMALS: ±.010 DEGREES: ±1°

Customer: AFS BRANDS
 Customer Quote Number: 286845-1
 Description: LOCKERS-SAYED-5-8-23 GAINSVILLE, FL

Drawn By: SP Checked By: Date: 05.10.2023 Scale: NONE
 Acad Number: E1 Sheet 1 Of 1 Revision:
 Drawing Number: CUT SHEET